

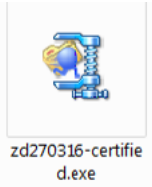
ZEBRA BARCODE SETUP INSTRUCTIONS

AIMSI V10.0 AND NEWER



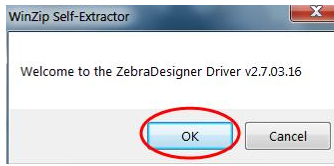
Zebra GC420 Setup in Windows

1. Install the barcode labels in the barcode printer and hook up the printer to the computer. If you need help with this refer to the User Guide included with your barcode printer or view it here:
www.zebra.com/content/dam/zebra/manuals/en-us/printer/gc420d-ug-en.pdf.
2. Download the current driver from Zebra or Tri-Tech.
Zebra at www.zebra.com/us/en/support-downloads/desktop/gc420d.html
Tri-Tech at www.technology4retailers.com/t-hardwaresetup.aspx.
3. After the driver is downloaded double click to install it. Click **Run** if you get any open file security warnings.

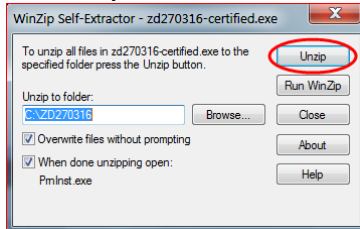


The Print Driver

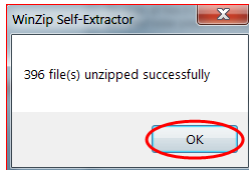
1. Click **OK**.



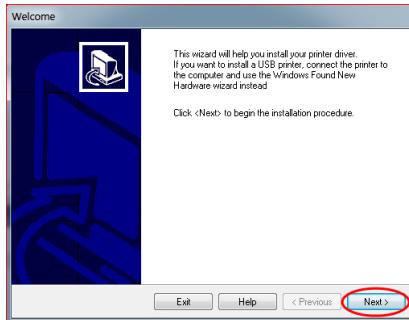
2. Click **Unzip**.



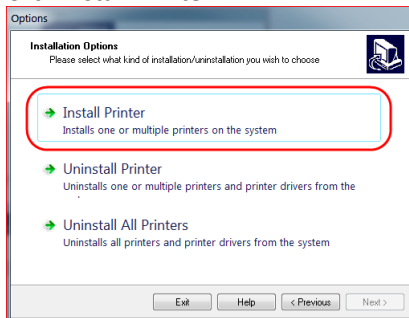
3. Click **OK**.



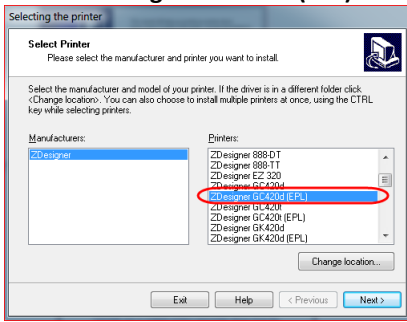
4. Click **Next**.



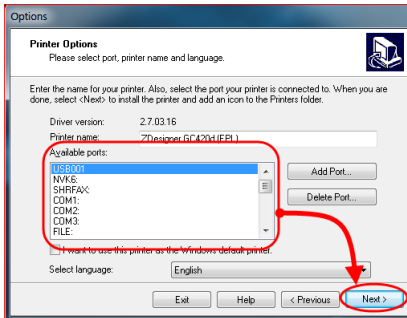
5. Click **Install Printer**.



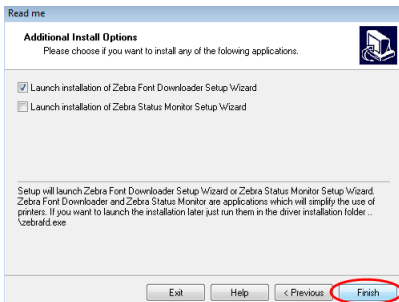
6. Choose **ZDesigner GC420d (EPL)** and click **Next**.



7. Choose the **Port** then click **Next**.

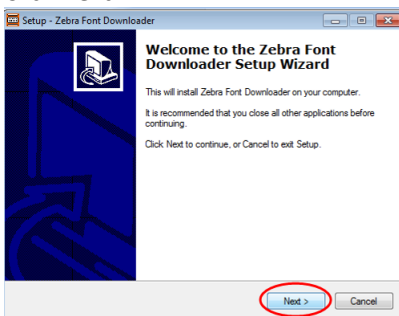


8. Click **Finish**.

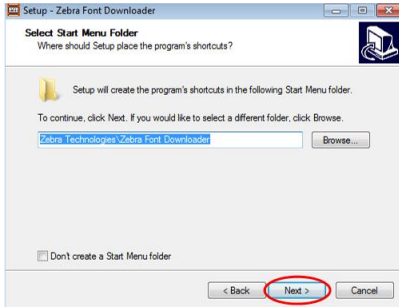


The Zebra Font Downloader Wizard

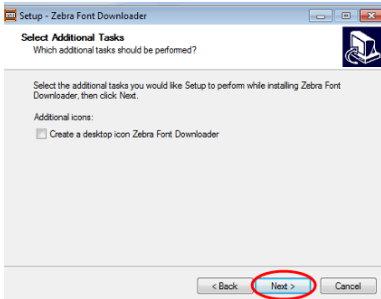
1. Click **Next**.



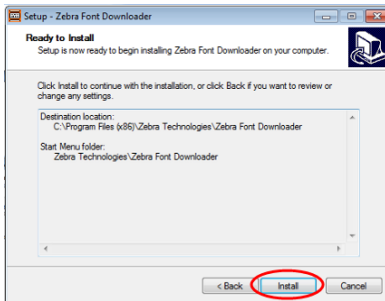
2. Click **Next**.



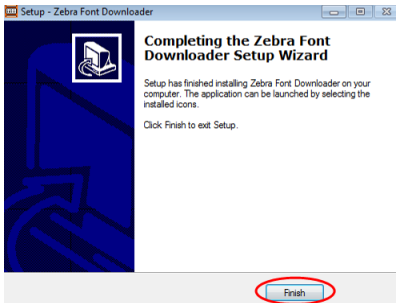
3. Click **Next**.



4. Click **Install**.



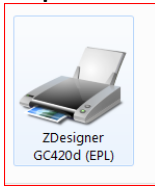
5. Click **Finish**.



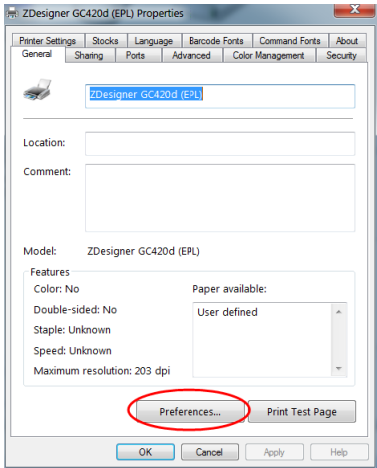
Install the Direct Thermal Labels in the printer and Calibrate.

The labels should face upward once you have them installed. Calibrate the printer once you install the labels so that it prints the correct number of labels when printed from AIMsi.

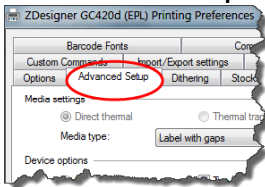
1. Go to **Devices and Printers** in Windows and find the Zebra Printer. Right-click on the printer and choose **Printer Properties**.



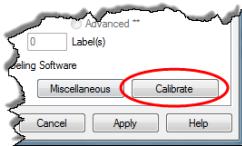
2. Click **Preferences**.



3. Click **Advanced Setup**.



4. Click **Calibrate**.

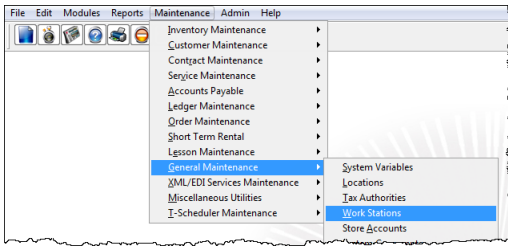


5. When the calibration is complete and feeding of blank labels has stopped, turn the printer off and then back on. Press the green feed button on the printer to make sure that it only feeds one label.

Set up the barcode printer in AIMsi.

You must install your printer in Windows following the installation instructions above before you install it in AIMsi.

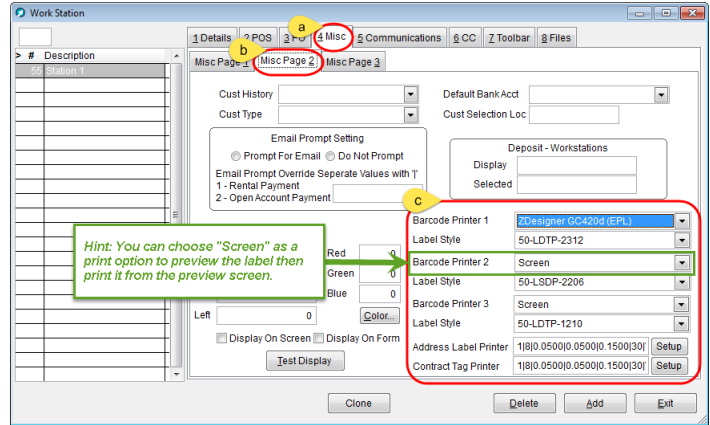
1. Go to **Work Station Maintenance** in AIMsi.



2. On the **Work Station** window, complete the following.

- Click the **Misc** tab.
- Click the **Misc Page 2** sub-tab.
- Establish up to 3 different barcode printers and the label styles they print in the boxes on the lower-right of the window. If you do not have any label styles to select, set those up first (refer to the instructions below to complete this).

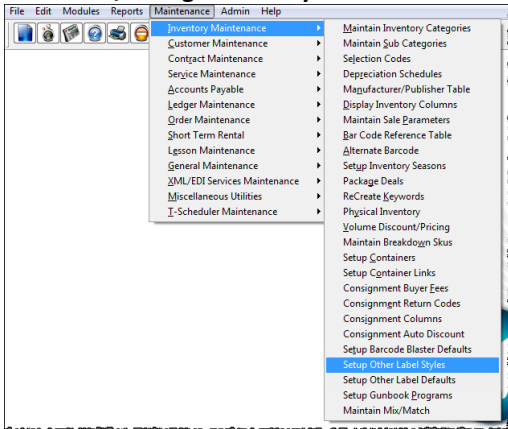
Hint: You can choose "Screen" as a print option to preview the label then print it from the preview screen.



Barcode Label Setup Styles

You can choose from a wide variety of barcode labels and tags each with different sizes and dimensions. In order for the barcode printer to print them correctly you will need to set up label styles.

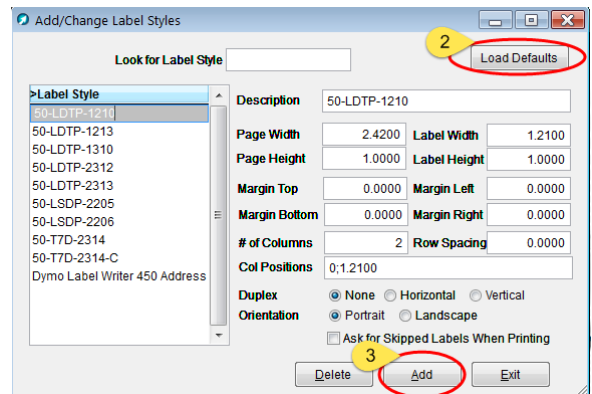
1. Go to **Add/Change Label Styles**.



2. Click **Load Defaults** to pre-load all the Tri-Tech label/tag defaults (labels and tags sold by Tri-Tech). The image is an example of the window after the defaults are loaded.

3. If you have a custom label that is not one of the default labels/tags sold by Tri-Tech click **Add** (see #3 on corresponding image) to match the label/tag that you have loaded in the barcode printer. Complete the boxes as described below.

Hint: When setting up a new label/tag compare it to the default labels and use that as a starting point for your label/tag dimensions. Use a tape measure or ruler for exact measurements.

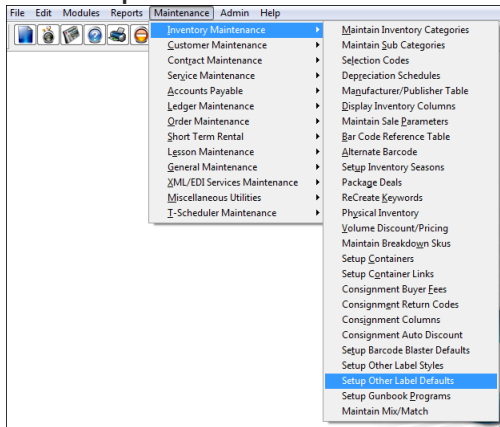


- **Description**
Enter a description for the label style. You can enter up to 40 characters here.
- **Dimension options** Take measurements of your labels in inches and convert the inches to decimals for the following boxes. For example, if you have a measurement of 1-2/16 inches, enter 1.125.
 - **Page Width / Page Height**
Enter the width and height of your roll of media.
 - **Label Width / Label Height**
Enter the width and height of an individual label/tag.
 - **Margins**
Enter the amount of white space to leave around each side of an individual label/tag.
- **# of Columns**
Enter the number of columns to print horizontally across the label/tag.
- **Col Positions** (only used if “# of Columns” is greater than 1)
Enter the starting position, in inches, of each column on the label. Separate entries with a semi-colon. For example, 0;1.125.
- **Row Spacing**
Enter the amount of vertical space between each label/tag.
- **Duplex**
Select **None** unless you are using double-sided media. If you are using double-sided media, indicate if you want to duplex horizontally or vertically.
- **Orientation**
Select **Portrait** unless you want to print labels/tags using the long side of your media.

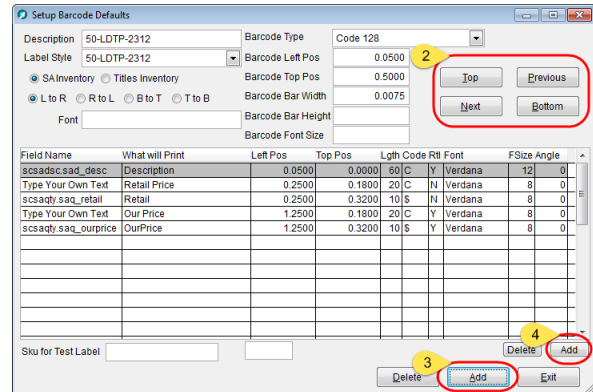
Note: We believe you should be able to use any printer and labels/tags as long as the correct dimensions are entered in Add/Change Label Styles. However, Tri-Tech can only support the printers and barcode labels/tags that are purchased directly from us.

Designing the label/ Setup Barcode Blaster Default

1. Go to Setup Barcode Defaults.



2. Use the **Next**, **Previous**, **Top**, and **Bottom** buttons (see #2 in image below) to review the default label layouts (created when you clicked in step 2 of *Barcode Label Setup Styles*). The following image is an example of one default label layout. Examples of the remaining default layouts and finished label can be found at the end of this document.



3. Click **Add** (see #3 in corresponding image) to create a layout for a custom label. Complete the boxes as described below. Use a tape measure or ruler for exact measurements.

Hint: This step is only necessary if you are not using a default label/tag sold by Tri-Tech. Use a tape measure or ruler for exact measurements.

- **Description**

Enter a description for the label default you are creating.

- **Label Style**

Select a label style for your default. You created label styles in *Barcode Label Setup Styles*.

- **SA Inventory / Titles Inventory**

Indicate if this default is for your serialized and accessories inventory or your titles inventory.

- **Barcode Type**

Select a barcode type for this label default. Refer to your printer documentation for additional information on barcode types.

Hint: We recommend keeping barcode type Code 30 or Code 128 if you create your own default layout. You can also set this to None if you do not want to use a barcode for this default layout.

- **L to R, R to L, B to T, and T to B**

Select an option to indicate if the barcode should print on the labels left to right, right to left, bottom to top, or top to bottom. L to R and R to L print horizontally on the label and B to T and T to B print vertically.

- **Barcode Left Pos and Barcode Top Pos**

Indicate, in inches, how far from the left and top edges of the label the barcode should start.

- **Barcode Bar Width**

Indicate, in inches, the maximum width of the barcode on the label. This is the width between the barcode lines; we suggest a minimum value no smaller than 0.0075 or 0.0085 for accurate readability by your barcode printer.

- **Barcode Bar Height**

Indicate, in inches, the maximum height of the barcode on the label. Tri-Tech does not recommend changing this value.

- **Barcode Font Size**

Enter the size of the font for the text below the barcode (typically the barcode number). Valid values are 8, 10, 12 14, and 16.

4. Click **Add** (directly below the grid, see #4 in the image above) to add additional fields to your barcode label. This makes available the columns in the grid. Enter information in each column as described below.

- **Field Name**

Select the AIMsi field you want the label printer to reference when creating an item on your label or select

Type Your Own Text. For descriptions of each field name, refer to the *Field Name values for barcodes* topic in the online help.

- **Left Pos** and **Top Pos**
Indicate, in inches, how from the left and top the field should print.
- **Lgth**
Enter the character length of the field.
- **Code**
Enter the type of information that should print on the label. Enter **B** for the barcodes, **C** for character fields, **\$** for currency fields, and **L** for logical fields.
- **Rtl**
Determines when the field should print on the label based on the item's Retail and Ourprice values. Select **Y** to print the field on the label when the item's Ourprice value is less than its Retail value. Select **N** to prevent the field from printing on the label when the item's Ourprice value is equal to or greater than its Retail value. Most often, only the Retail field would be excluded from the printed label when the Ourprice value is equal to or greater than the Retail value.
- **Font**
Enter the font family you want to use for your labels, such as Verdana, Arial, or Times New Roman. Valid fonts are any supported by your label printer. Refer to the user manual for your label printer for a list of options. For bold font, enter the font family name followed by the word Bold. For example, Verdana Bold.
- **Fsize**
Enter the printed size of the Font.
- **Angle**
Controls the pitch, or angle, of your text. Enter any number between 0 and 359. To print text in italics, enter 45. To print text vertically, enter a value between 90 and 270.

5. Enter a SKU and quantity to test your barcode label and press **Enter** (be sure your cursor is in the **Skus for Test Label** box).



The screenshot shows a software window with a table. The table has three columns: 'Skus for Test Label', 'RT14', and '1'. A red circle highlights the 'Skus for Test Label' column. Below the table are buttons for 'Save', 'Cancel', 'Delete', 'Add', and 'Exit'.

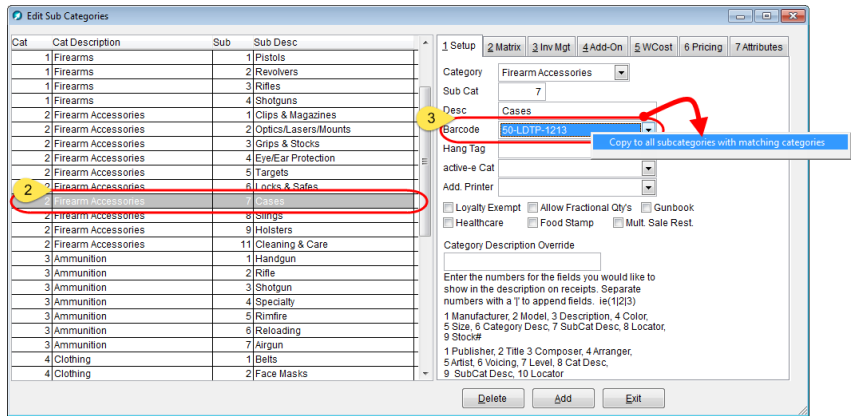
Set up Inventory Subcategories

1. Go to Edit Sub Categories to assign different label defaults to your inventory subcategories.

2. Select a category/subcategory from the grid (#2 on image).

3. Select the barcode default you use when printing barcode labels/tags in the **Barcode** box (see #3 on image).

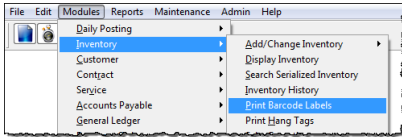
Hint: If you are assigning the same label default to all subcategories in a category, save time by right-clicking in the Barcode box (after you've selected and saved a default) and click Copy to all subcategories with matching categories.



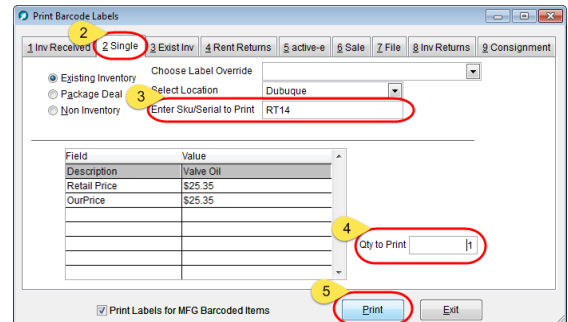
***Note: In order for labels to print for items, their subcategory must have a barcode default assigned.*

Printing Barcodes

1. Go to Print Barcode Labels.



2. Click the **Single** tab (see #2 on image).
3. Enter the SKU for which you want to print barcode labels/tags (see #3 on image).
4. Enter the quantity of barcodes labels/tags you want to print (see #4 on image).
5. Click **Print** (see #5 on image).



DEFAULT BARCODE LABEL LAYOUTS

The following images are snippets of Tri-Tech's default barcode label layouts from the Setup Barcode Defaults window (refer to section **Designing the label/ Setup Barcode Blaster Default**, above).

50-LDTP-2312

Field Name	What will Print	Left Pos	Top Pos	Lgth	Code	Rtl	Font	FSize	Angle
scsadsdc.sad_desc	Description	0.0500	0.0000	60	C	Y	Verdana	12	0
Type Your Own Text	Retail Price	0.2500	0.1800	20	C	N	Verdana	8	0
scsaqty.saq_retail	Retail	0.2500	0.3200	10	\$	N	Verdana	8	0
Type Your Own Text	Our Price	1.2500	0.1800	20	C	Y	Verdana	8	0
scsaqty.saq_ourprice	OurPrice	1.2500	0.3200	10	\$	Y	Verdana	8	0

50-LDTP-2313

Field Name	What will Print	Left Pos	Top Pos	Lgth	Code	Rtl	Font	FSize	Angle
scsadsdc.sad_desc	Description	0.0500	0.0000	60	C	Y	Verdana Bold	12	0
Type Your Own Text	Retail Price	0.2500	0.2000	20	C	N	Verdana	10	0
scsaqty.saq_retail	Retail	0.2500	0.3800	10	\$	N	Verdana	10	0
Type Your Own Text	Our Price	1.2500	0.2000	20	C	Y	Verdana	10	0
scsaqty.saq_ourprice	OurPrice	1.2500	0.3800	10	\$	Y	Verdana	10	0

50-LDTP-1213

Field Name	What will Print	Left Pos	Top Pos	Lgth	Code	Rtl	Font	FSize	Angle
scsadsdc.sad_desc	Description	0.0500	0.0000	40	C	Y	Verdana Bold	8	0
Type Your Own Text	Our Price	0.1500	0.2000	20	C	Y	Verdana	8	0
scsaqty.saq_ourprice	OurPrice	0.1500	0.3800	10	\$	Y	Verdana	8	0

50-LDTP-1310

Field Name	What will Print	Left Pos	Top Pos	Lgth	Code	Rtl	Font	FSize	Angle
scsadsdc.sad_desc	Description	0.0500	0.0000	40	C	Y	Verdana Bold	8	0
Type Your Own Text	Our Price	0.1500	0.1500	20	C	Y	Verdana	8	0
scsaqty.saq_ourprice	OurPrice	0.1500	0.3000	10	\$	Y	Verdana	8	0

50-LDTP-1210

Setup Barcode Defaults

Description: 50-LDTP-1210 Barcode Type: Code 128

Label Style: 50-LDTP-1210 Barcode Left Pos: 0.0500

SA Inventory (selected) Titles Inventory Barcode Top Pos: 0.5000

L to R (selected) R to L B to T T to B Barcode Bar Width: 0.0075

Font: Barcode Bar Height: Barcode Font Size:

Field Name	What will Print	Left Pos	Top Pos	Lgth	Code	Rtl	Font	FSize	Angle
scsadsdsc.sad_desc	Description	0.0500	0.0000	40	C	Y	Verdana Bold	8	0
Type Your Own Text	Our Price	0.1500	0.1500	20	C	Y	Verdana	8	0
scsaqty.saq_ourprice	OurPrice	0.1500	0.3000	10	\$	Y	Verdana	8	0

50-T7D-2314

Setup Barcode Defaults

Description: 50-T7D-2314 Barcode Type: Code 128

Label Style: 50-T7D-2314 Barcode Left Pos: 0.0500

SA Inventory (selected) Titles Inventory Barcode Top Pos: 0.7500

L to R (selected) R to L B to T T to B Barcode Bar Width: 0.0075

Font: Barcode Bar Height: Barcode Font Size:

Field Name	What will Print	Left Pos	Top Pos	Lgth	Code	Rtl	Font	FSize	Angle
scsadsdsc.sad_desc	Description	0.0500	0.0000	60	C	Y	Verdana Bold	12	0
Type Your Own Text	Retail Price	0.2500	0.2000	20	C	N	Verdana	10	0
scsaqty.saq_retail	Retail	0.2500	0.3800	10	\$	N	Verdana	10	0
Type Your Own Text	Our Price	1.2500	0.2000	20	C	Y	Verdana	10	0
scsaqty.saq_ourprice	OurPrice	1.2500	0.3800	10	\$	Y	Verdana	10	0

50-T7D-2314-C

Setup Barcode Defaults

Description: 50-T7D-2314-C Barcode Type: Code 128

Label Style: 50-T7D-2314-C Barcode Left Pos: 0.0500

SA Inventory (selected) Titles Inventory Barcode Top Pos: 0.7500

L to R (selected) R to L B to T T to B Barcode Bar Width: 0.0075

Font: Barcode Bar Height: Barcode Font Size:

Field Name	What will Print	Left Pos	Top Pos	Lgth	Code	Rtl	Font	FSize	Angle
scsadsdsc.sad_desc	Description	0.0500	0.2000	40	C	Y	Verdana Bold	8	0
Type Your Own Text	Our Price	0.1500	0.4000	20	C	Y	Verdana	8	0
scsaqty.saq_ourprice	OurPrice	0.1500	0.5800	10	\$	Y	Verdana	8	0

50-LSDP-2205

Setup Barcode Defaults

Description: 50-LSDP-2205 Barcode Type: None

Label Style: 50-LSDP-2205 Barcode Left Pos: 0.0000

SA Inventory (selected) Titles Inventory Barcode Top Pos: 0.0000

L to R (selected) R to L B to T T to B Barcode Bar Width: 0.0000

Font: Barcode Bar Height: Barcode Font Size:

Field Name	What will Print	Left Pos	Top Pos	Lgth	Code	Rtl	Font	FSize	Angle
scsaqty.saq_sku	Sku#	0.1200	0.2000	15	C	Y	Verdana	8	0
Type Your Own Text	Price	1.5000	0.1000	20	C	Y	Verdana	10	0
scsaqty.saq_ourprice	OurPrice	1.4500	0.2500	10	\$	Y	Verdana	10	0

50-LSDP-2206

Setup Barcode Defaults

Description: 50-LSDP-2206 Barcode Type: None

Label Style: 50-LSDP-2206 Barcode Left Pos: 0.0000

SA Inventory (selected) Titles Inventory Barcode Top Pos: 0.0000

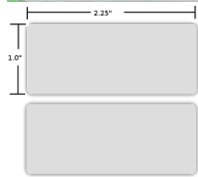
L to R (selected) R to L B to T T to B Barcode Bar Width: 0.0000

Font: Barcode Bar Height: Barcode Font Size:

Field Name	What will Print	Left Pos	Top Pos	Lgth	Code	Rtl	Font	FSize	Angle
scsaqty.saq_sku	Sku#	0.1200	0.2000	15	C	Y	Verdana	8	0
Type Your Own Text	Price	1.5000	0.1000	20	C	Y	Verdana	10	0
scsaqty.saq_ourprice	OurPrice	1.4500	0.2500	10	\$	Y	Verdana	10	0

DIRECT THERMAL BARCODE LABELS - ZLABELS/LABELS

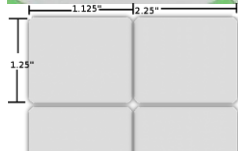
**Zebra 50-LDTP-2312 @ \$9.72/roll Cognitive
20-LDTP-2312-3 @ \$9.97/roll**



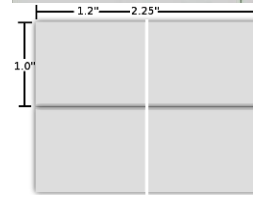
**Zebra 50-LDTP-2313 @ \$9.72/roll
Cognitive 20-LDTP-2313-3 @ \$9.97/roll**



**Zebra 50-LDTP-1213 @ \$9.72/roll
Cognitive 20-LDTP-1213-3 @ 9.97/roll**



**Zebra 50-LDTP-1210 @ \$9.30/roll
Cognitive 20-LDTP-1210-3 @ 9.97/roll**

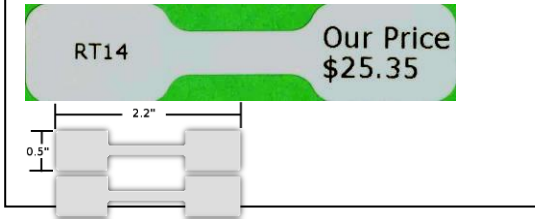


**Zebra 50-LDTP-1310 @ \$9.13/roll
Cognitive 20-LDTP-1310-3 @ \$9.97/roll**

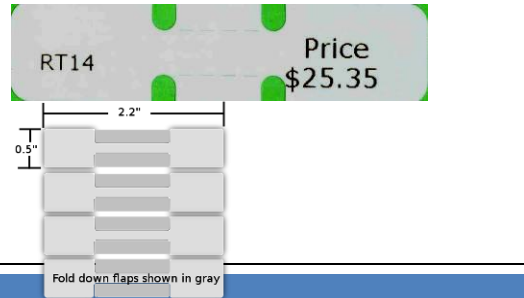


DIRECT THERMAL BUTTERFLY LABELS – ZBLABELS

Zebra 50-LSDP-2205 @ \$17.98/roll



Zebra 50-LSDP-2206 @ \$17.98/roll



DIRECT THERMAL TAGS – ZTAGS/TAGS

Cognitive 20-T7D-2410 @ \$14.00/roll



Cognitive 20-T7D-2420 @ \$14.00/roll



Zebra 50-T7D-2314 @ \$11.30/roll



Zebra 50-T7D-2314-C @ \$11.30/roll

