

## ELO 1715L Touch Screen Monitor Setup

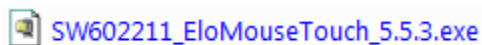


### Connecting the Elo Touch Screen to the computer

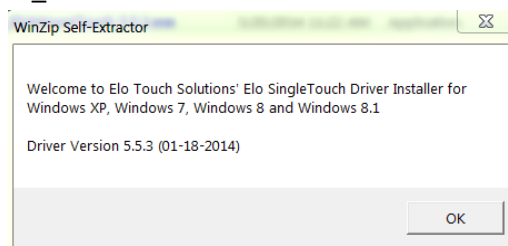
- 1) The Elo Touch Screen comes with multiple monitor cables. You will need to look at the back of your computer to see if you are using the correct one. One monitor cable has a blue connector and the other is green. If you look on the back of your computer and on the bottom of the monitor connection there will be a blue or green color to match. Please call technical support if you are not sure which cable to use.
- 2) Connect the USB cable provided to the bottom of the monitor and to your computer.
- 3) Connect the black power cable to the bottom of the monitor.

### Installing the Elo Driver on your computer

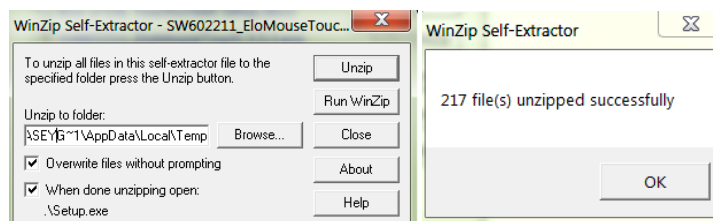
- 1) Go to the Elo Touch Website: <http://www.elotouch.com/Support/Downloads/dnld.asp>
- 2) Click the “Windows 8/7/XP/Vista Single-Touch Driver”
- 3) Download the “Elo Touch Solutions Single-Touch Driver”
- 4) Double click on the “SW602211\_EloMouseTouch\_5.5.3.exe” file you downloaded to start the installer.



- 5) Click “OK” on the WinZip Self\_Extractor



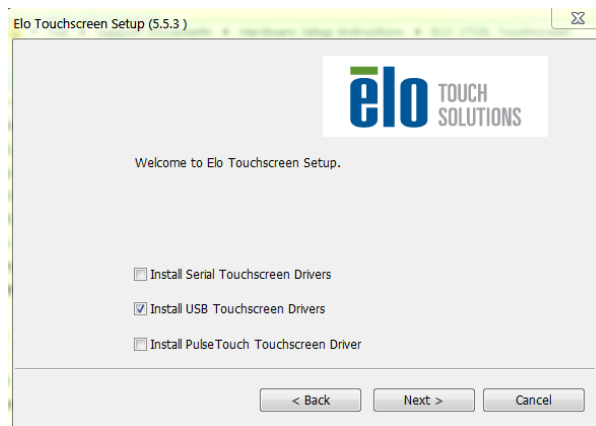
- 6) Click “Unzip” to extract the driver files and then Click “OK”



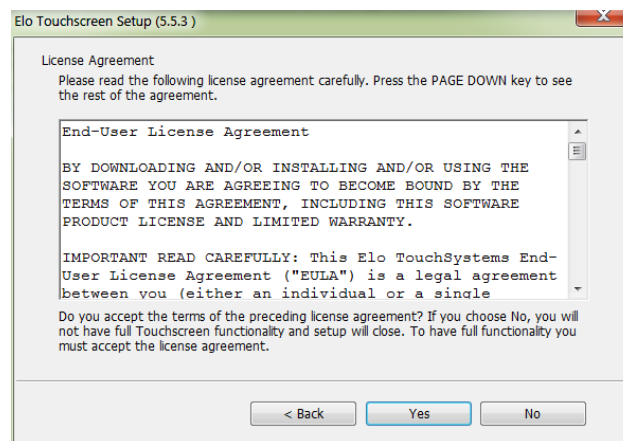
7) Click "Next"



8) Choose "Install USB Touchscreen Driver" then click "Next"



9) Click "Yes"



10) Click "Finish"



## Calibrating the Touch Screen

Calibration is required if you are setting up the Touch Screen on your computer for the first time.

1. Go to the Control Panel in Windows
2. Double-click the **Elo Touch Screen** icon.  
The Elo Touch Screen Properties window appears.
3. Click **Align**.
4. Touch the targets as directed.

Enhanced Calibration may be required if using Windows 8. This will be the same as above but will have some extra steps when clicking the target areas.